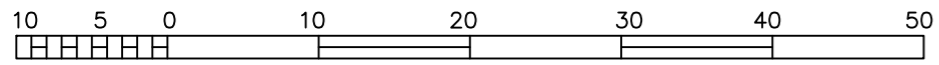


Sketch Plan showing Proposed Subdivision of Lot 2, Sec 19, Tp 22, R 10, W6M, KDYD, Plan 7570

Scale 1:500

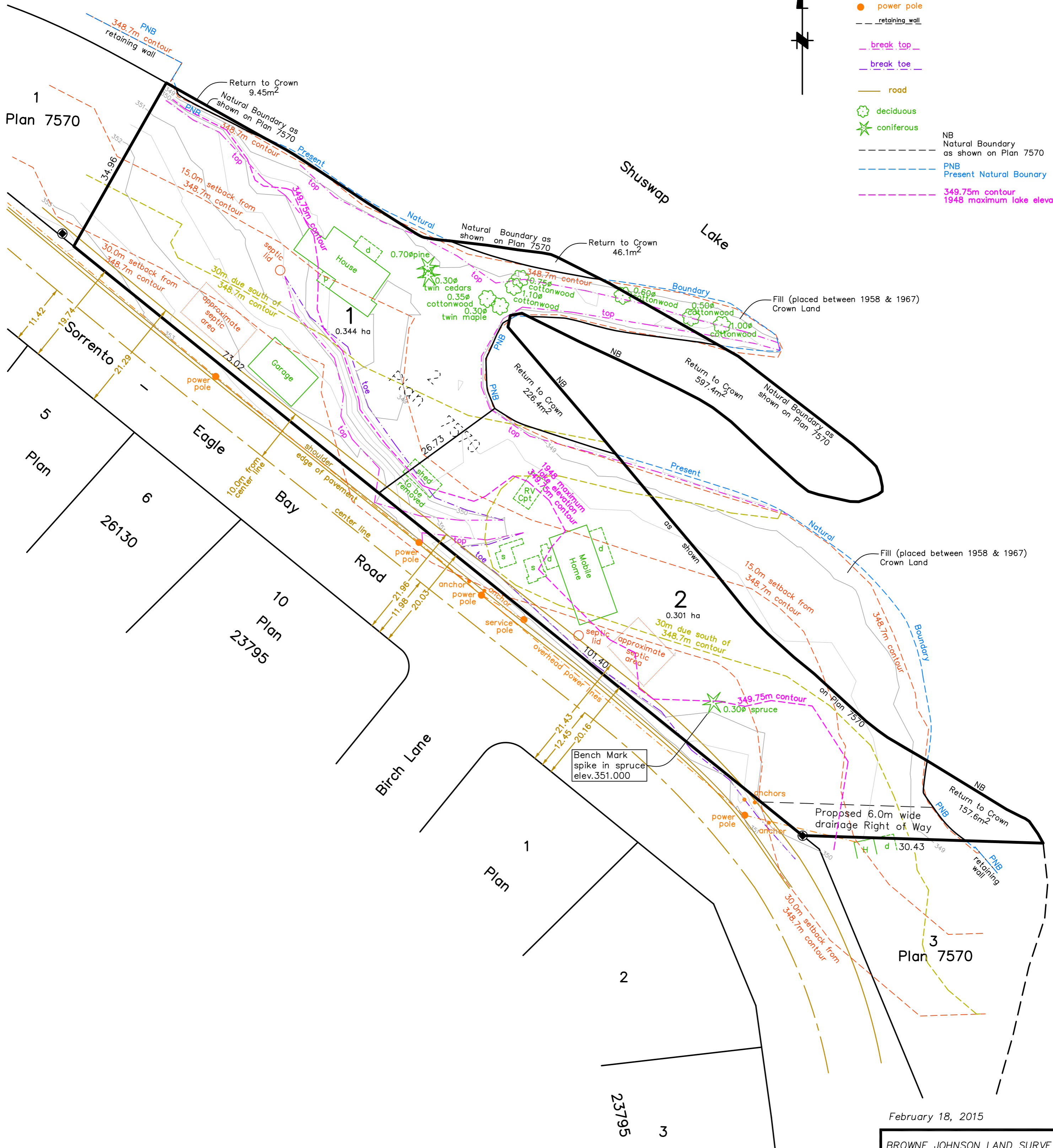


All distances are in metres.

The intended plot size of this plan is 432mm in width by 560mm in height (C size) when plotted at a scale of 1:500

LEGEND

- Standard Iron Post Found
- ⊙ Non-Standard Iron Post Found
- Contour interval is 0.5m
- Elevations are geodetic
- anchor
- power pole
- - - retaining wall
- - - break top
- - - break toe
- road
- deciduous
- ★ coniferous
- NB Natural Boundary as shown on Plan 7570
- PNB Present Natural Boundary
- 349.75m contour 1948 maximum lake elevation



February 18, 2015

BROWNE JOHNSON LAND SURVEYORS
 B.C. AND CANADA LANDS
 SALMON ARM, B.C. Ph.250-832-9701
 File: 164-14 164-14.raw